

Middleton Hall

Site Biodiversity Action Plan



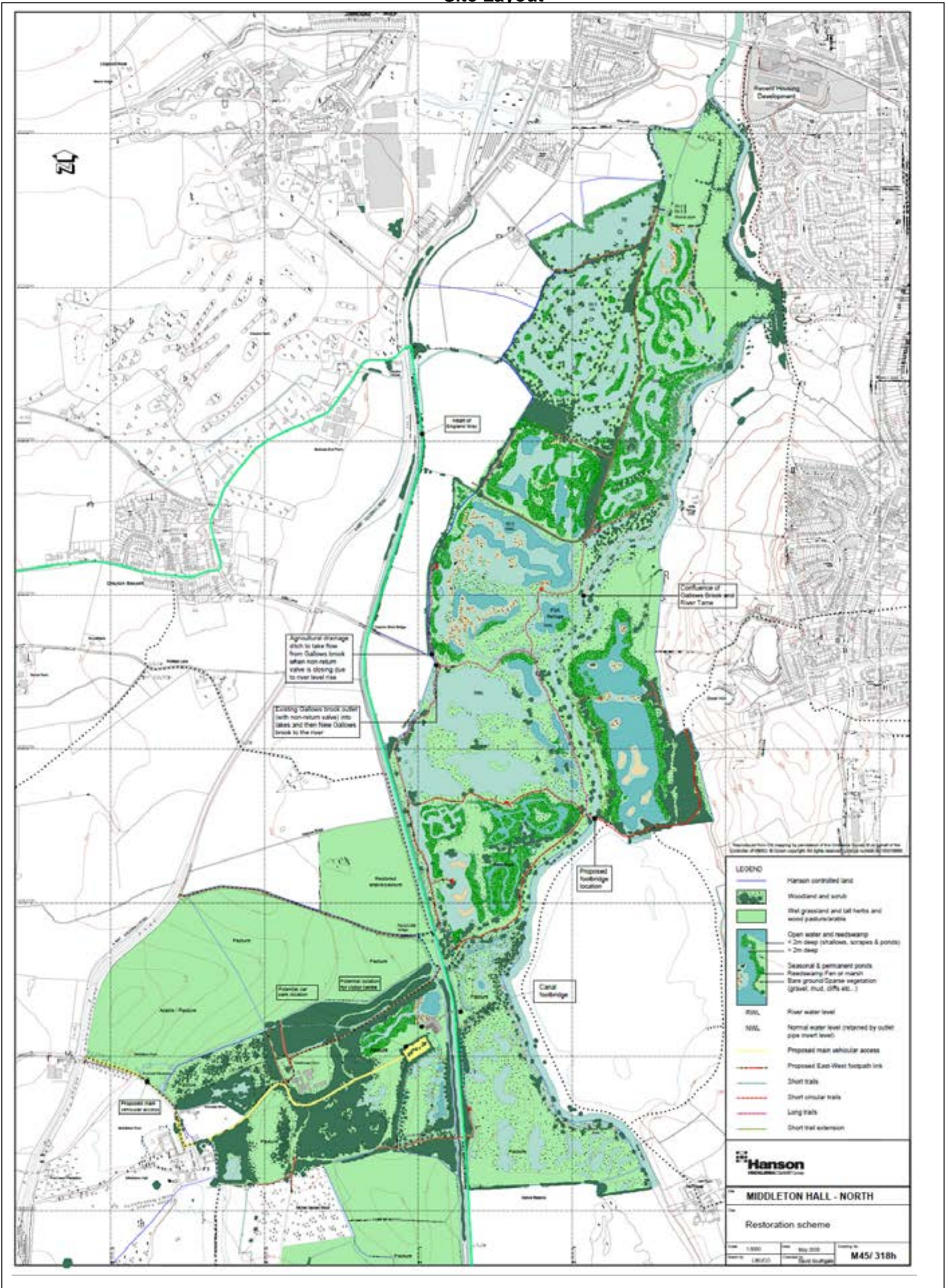
Prepared: 2006

Updated: 2013

Site Information- Middleton Hall

Site Name and Location (incl. Grid Ref.)	Middleton Hall Quarry, Tamworth, Staffordshire (SP 192966)
Hanson Company	HANSON AGGREGATES – CENTRAL
BAP(s) that will be targeted	National BAP Staffordshire LBAP Warwickshire, Coventry and Solihull LBAP
Habitat(s) to be developed	Rivers and Streams; Reedbeds; Wet Woodland; Standing Open Water & Canals.
BAP species to be encouraged	Water Vole; Otter; Barn Owl.
Designated Natural Area	Trent and Valley Rises.
Background and site description	Middleton Hall Quarry extends to just over 400 ha in the floodplain and terraces of the River Tame, just south of Tamworth, Staffs. The site straddles the county boundary between Warwickshire and Staffordshire and comprises a range of restored land uses including agriculture of various grades, woodland, football pitches and an extensive floodplain nature reserve, which is still in the process of being restored. The RSPB are involved with the design of the floodplain restoration, as they intend to acquire the site. The restored Dosthill area has been designated an SBI. Middleton Hall SSSI neighbours the site.
National Designations (SSSI, SAC, SPAs, RAMSARs and NPs) within 500m	Middleton Pool SSSI- Ref: 1002277 http://www.sssi.naturalengland.org.uk/special/sssi/sssi_details.cfm?sssi_id=1002103
Resource Requirements-comment on cost if appropriate	Regular contact with RSPB, West Midlands Bird Club and Staffs Wildlife Trust, which gleans monitoring data. Pre-strip ecological surveys are a requirement of planning conditions. Protection of existing habitats is a legal requirement.
Contribution to biodiversity	Increasing the areas of reedbeds and wet woodlands are national habitat priorities. The restoration of the entire wetland complex will create a large nature reserve capable of supporting significant populations of non-target species and of BAP priority species including Water Vole and Otter. Barn Owl boxes have been erected around the site previously and will be replaced/repared as necessary to ensure they continue to provide nesting sites for a local target species.
Partners and Local initiatives	Staffordshire Wildlife Trust. RSPB.
Other documents supporting the site BAP	Middleton Hall Environmental Statement.

Site Layout



Action Plan

Item No.	Objective	Biodiversity Feature	Targets	Tasks	Assessing Indicator	Responsible Person	Timescale (Completion)
1	Restore important habitats.	Wet Woodland. Rivers & Streams. Open Water & Canals.	230 ha of floodplain restored to a mosaic of open water, channels, ponds, reedswamp, fen, wet woodland, wet grassland and braided river channel.	In compliance with approved restoration scheme, progressively restore site utilising planting and natural regeneration, as appropriate.	Successful completion of all restoration works in accordance with approved scheme.	Landscape Architect.	3 years.
2	Restore important habitats.	Reedbed	7 hectares new reedbed.	Create landform capable of supporting reedbed development and inoculate with reeds either by planting or other approved means (e.g. rhizome transplanting).	Area (ha) reed shelf created and successful take of reed plants.	Landscape architect.	3 years.
3	Consult with BAP partner organisations.	Site restoration.	Maintain regular contact with RSPB. Two meetings per year.	Continue restoration design consultation with RSPB.	Number of meetings between Hanson and RSPB.	Landscape Architect.	Twice per year for life of site (3 years).
4	Encourage rare species.	Water Vole, Otter.	Species noted on site.	Restoration of site as per target 1. Consideration given to utilisation of materials (e.g. tree felling arisings) to create habitat opportunities.	Sightings of species by site staff, consultant ecologist or third parties (e.g. bird club members, Staffs WT mammal surveys).	Landscape Architect, Site Manager.	Annual report for life of site (3 years).
5	Protect species.	Barn Owl.	Maintain existing owl boxes.	Monitor condition of owl boxes and repair/replace as appropriate.	Owl boxes monitored annually.	Site Manager.	Once per year for life of site (3 years).